

## Contents

Bi-Fold Lift System . . . . .	G-12	Modifications . . . . .	G-2
Center Mull . . . . .	G-5	Partitions . . . . .	G-8
Chamfered Stile . . . . .	G-8	Peninsula Cabinets. . . . .	G-7
Chamfered Stile With Flutes . . . . .	G-8	Pigeon Hole Unit . . . . .	G-7
Decorative Wall End . . . . .	G-3	Pigeon Hole Unit Attached To A Cabinet	G-7
Delete Doors . . . . .	G-12	Pilaster Added To End Of Cabinet . . . .	G-3
Door On End Of Wall Cabinet . . . . .	G-3	Recessed Bottom . . . . .	G-4
Door Pilaster Added To End Of Cabinet .	G-3	Retractable Door Partition . . . . .	G-12
Dust Strip. . . . .	G-5	Retractable Doors . . . . .	G-12
End Panel . . . . .	G-6	Shelf (Additional). . . . .	G-12
End Panel, Angled . . . . .	G-6	Shelf, Glass . . . . .	G-12
End Panel Boxed. . . . .	G-6	Shelf, Wood Framed Glass . . . . .	G-12
End Panel, Radius . . . . .	G-6	Shelf, Wood Revolving. . . . .	G-12
Extended Side Back . . . . .	G-11	Spice Drawers . . . . .	G-10
Extended Side Down. . . . .	G-11	Spice Rack, Door. . . . .	G-10
Extended Stiles. . . . .	G-4	Spice Rack, Swing Out. . . . .	G-10
Extended Top Or Bottom Rail . . . . .	G-4	Spindles . . . . .	G-6
Filler . . . . .	G-5	Stemware Holder. . . . .	G-10
Filler, Angled . . . . .	G-5	Three Door Wall Cabinet. . . . .	G-7
Filler, Corner . . . . .	G-5	Tilt Out Storage Bin . . . . .	G-10
Filler, Overlay. . . . .	G-5	Unfinished Cabinets . . . . .	G-12
Fillers, Angled Overlay . . . . .	G-5	Valance, Arched . . . . .	G-9
Finished Backs. . . . .	G-7	Valance, Bottom Rail . . . . .	G-9
Finished End Panel . . . . .	G-11	Valance, Door Style . . . . .	G-9
Finished Wall Bottom Plywood. . . . .	G-3	Valance, Door Style Arch. . . . .	G-9
Floating Shelf. . . . .	G-11	Valance In Lieu Of Top Rail . . . . .	G-9
Fluting . . . . .	G-8	Valances . . . . .	G-9
Fronts . . . . .	G-11	Wine Rack Shelf . . . . .	G-10
Internal Stiles. . . . .	G-4	Wood Revolving Shelf . . . . .	G-11
Internal Top Or Bottom Rail . . . . .	G-4		

## Items Only Available in Hampshire Custom line

Angled Cabinets, Single Front . . . . .	G-13	Flush Sides. . . . .	G-14
Angled Cabinets, Two Fronts . . . . .	G-13	French Country Corner. . . . .	G-14
Clipped Cabinets . . . . .	G-13	Hutch End . . . . .	G-14
Corner Notch Wall Modification . . . . .	G-14	Obstruction Cutout . . . . .	G-13
Decorative Wall End, Flush . . . . .	G-13	Shelves Fixed Or 3-Hole Option . . . . .	G-15
Face Frame And Door		Toe Kick Added To Wall Cabinet . . . . .	G-15
On End Of Wall Cabinet . . . . .	G-14	Veneered Skin . . . . .	G-15
Flush Finished Top Or Bottom . . . . .	G-14		

## Wall Cabinet Modifications

For special width cabinets between standard sizes – use the next largest standard size.

For **special width cabinets wider than standard** – add 15% (Stonebridge) or 10% (Custom) to the price of the widest standard cabinet for every 3” increase in width. 60” maximum width.

For **special height cabinets between standard sizes** – use the next largest standard size and add \$100.00 in the accessory column.

For **special height cabinets taller than standard** – add 15% (Stonebridge) or 10% (Custom) for every 3” increase in height, added to the tallest standard cabinet.

For **special depth cabinets less than 12” deep** – use the 12” deep price.

For **special depth cabinets deeper than 12”** – add 15% (Stonebridge) or 10% (Custom) of the standard 12” deep cabinet for every 4” increase in depth.

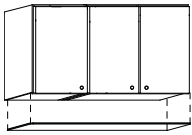
**Finished interior** means the interior of the cabinet is finished in the same wood species and color as the exterior and the shelves are 3/4” thick plywood. Add 25% of the cabinet price. If doors are deleted, no up charge for finished interior.

**Finished interior backs**, when using Series 310 or Series 3000, will be MDF core plywood.

To change the configuration of the door or drawer arrangement on a cabinet is considered a facing change as long as the overall size of the cabinet remains the same.

FACING CHANGE            \$180

## Finished Wall Bottom Plywood (needed on framed cabinetry only)



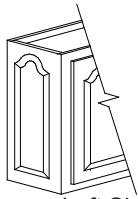
The bottoms of all wall cabinets are unfinished on framed cabinetry. Finished plywood is recommended to be installed. The plywood is 3/4" shallower than the depth of wall cabinets and comes standard at 96" length. Wall corner angled cabinets will automatically come with the finished bottom shipped loose, and is pre fit for the cabinet at no charge.

FWBP-4	\$28.80	4' x 12"
FWBP-8	\$27.60	8' x 12"
FWBP	\$0.05	per square inch

## Decorative Wall End

### Door style charges also apply, (framed cabinetry only)

Integral inlay panel manufactured into the side of a wall cabinet.



Left Shown

DWE 30	L-R	\$378	Up to 30" high
DWE 30-47	L-R	\$428	30" - 47" high.
DWE-DPD-H	L-R	\$521	48"-60" high DPD-H (split equally).
DWE-DPD-H 60-72	L-R	\$789	60" to 72" high DPD-H (split equally)

The following door styles need to be ordered as DOOR ON END OF CABINET (DRADDWALL) or FACE FRAME AND DOOR ON END OF CABINET (DRWE, Custom only), and priced accordingly.

**Stonebridge**  
Bonn  
Bradford  
Brighton

**Custom**  
Continental IX  
Continental X  
Continental XI

Continental XII  
Danville  
Douglas  
Edgemont

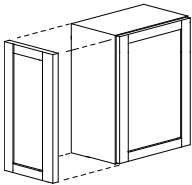
Marquis  
Pioneer  
Saxony  
Sheffield

Slab  
All Inset Doors

## Door On End Of Wall Cabinet

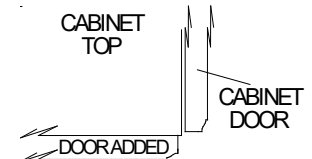
### Door style charges also apply

A door may be applied to the end of any wall cabinet. Door will be the same height as door on front of cabinet. Door will have as standard the same edge profile as the cabinet door. Width of cabinet will increase by 3/4" for each door added.



Left Shown

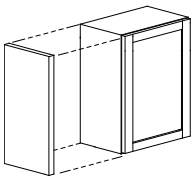
DRADDWALL 12-29	\$288
DRADDWALL 30-53	\$398
DRADDWALL 54-60	\$425
DRADDWALL 61-72	\$480



## 3/4" Thick Pilaster Added To End Of Cabinet

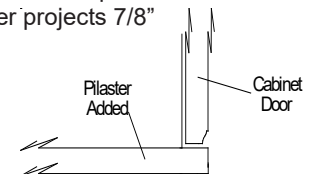
### (frameless cabinetry only)

A 3/4" thick pilaster may be added to the end of any frameless wall cabinet. The pilaster will be flush with the top, bottom, and back of cabinet, and will protrude beyond the cabinet face to line up with the front of cabinet door. Width of cabinet will increase by 3/4" for each pilaster added. Pilaster projects 7/8"



Left Shown

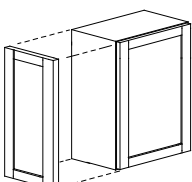
PIL12-29	\$152
PIL30-53	\$212
PIL54-60	\$225
PIL61-72	\$251



## 3/4" Thick Door Pilaster Added To End Of Cabinet

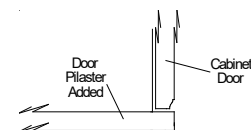
### Door style charges also apply, (frameless cabinetry only)

A 3/4" thick door pilaster may be added to the end of frameless wall cabinets. The door pilaster will be flush with the top, bottom, and back of cabinet, and will protrude beyond face to line up with the front of cabinet door. The door pilaster will have a square edge as standard. Width of cabinet will increase by 3/4" for each door pilaster added. Pilaster projects 7/8"



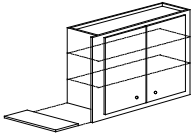
Left Shown

DRPIL12-29	\$248
DRPIL30-53	\$358
DRPIL54-60	\$385
DRPIL61-72	\$440



**Extended Stiles**  
(framed cabinetry only)

Up to 9" wide extended stiles are available on any wall cabinet. To cut a 45° angle, on an end specify STILE ANGLE CUT and add \$46.00. Send drawing.

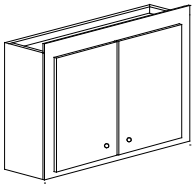


ES 0-3	L-R	\$119
ES 3-6	L-R	\$162
ES 6-9	L-R	\$216

3" EXTENDED STILE, With bottom, specify ES BOTTOM and add \$47  
shown with ES BOTTOM

**Extended Top Or Bottom Rail**  
(framed cabinetry only)

Top or bottom rail of face frame may be extended up to 9"

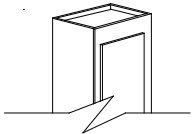


ETR 3 shown

ETR 0-3	\$119
ETR 3-6	\$162
ETR 6-9	\$215
EBR 0-3	\$119
EBR 3-6	\$162
EBR 6-9	\$215

**Internal Top Or Bottom Rail**  
(framed cabinetry only)

Up to 9" wide internal top (ITR) or bottom (IBR) rail on any cabinet. Specify size needed plus overall rail width.

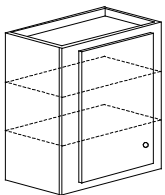


1 1/2" Interior Top Rail  
(Overall 3" wide)

ITR 0-3	\$119
ITR 3-6	\$162
ITR 6-9	\$215
IBS 0-3	\$119
IBR 3-6	\$162
IBS 6-9	\$215

**Internal Stiles**  
(framed cabinetry only)

Up to 9" internal stiles are available on any wall cabinet. Overall width of cabinet does not change. Specify internal stile width, LEFT or RIGHT side, plus overall stile width.

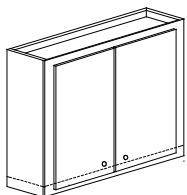


Internal stile Left 1 1/2"  
(Overall 3" wide stile)

IS 0-3	L-R	\$119
IS 3-6	L-R	\$162
IS 6-9	L-R	\$215

**Recessed Bottom**  
(framed cabinetry only)

To recess the bottom of the cabinet up a total of 6". Overall height of cabinet does not change. Doors remain same height on overlay styling. (Inset and beaded inset - call factory.)



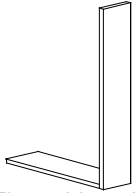
RECESSED BOTTOM	\$432
-----------------	-------

## Center Mulls And Dust Strips

Double door cabinets 24" through 36" have butt doors as a standard. 39" through 45" have a 1 1/2" center mull and a 48" cabinet has two pair of butt doors with a 1 1/2" center mull. Butt doors not available on cabinets 39" through 45". 1 1/2" center mull in a cabinet less than 39"

Center Mulls		Dust Strips	
CM	\$37	DS	\$32

## Wall Fillers



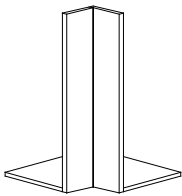
Floor shipped detached from filler

3" and/or 6" wide fillers are available, shipped loose. To cut a 45° angle, on an end specify WF ANGLE CUT and add \$33.00. Send drawing. The bottom of filler will be held up 5/16" to allow for installation of finished plywood after cabinets are installed.

WF 3X30	\$79	WF 6X30	\$120
WF 3X36	\$84	WF 6X36	\$134
WF 3X42	\$92	WF 6X42	\$149
WF 3X48	\$100	WF 6X48	\$165

NOTE: For fillers 60" and taller see section I.

## Corner Wall Filler

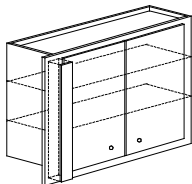


Floor shipped detached from filler

For angle other than 90°, specify CWF ANGLE CUT add \$73.00. Send drawing. Bottom of filler will be held up 5/16" to allow for installation of finished plywood after cabinets are installed.

CWF 3X3-30	\$158
CWF 3X3-36	\$169
CWF 3X3-42	\$195
CWF 3X3-48	\$221

## Overlay Fillers

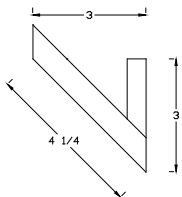


To be used on extended stiles, ears, or fillers when designing with 1 1/4" overlay or frameless.

OWF 3X30	\$79	OWF 6X30	\$120
OWF 3X36	\$84	OWF 6X36	\$134
OWF 3X42	\$92	OWF 6X42	\$149
OWF 3X48	\$100	OWF 6x48	\$165

Overlay fillers, depending on the overlay used, are 1/4" or 1/2" less in width and height than the extended stile, ear, or wall filler. The edge profile of overlay fillers will match the edge profile of the door style, if possible.

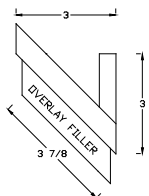
## Angled Filler



45 degree angled filler, face can be fluted, or half spindle attached.

45WF-30	\$136
45WF-36	\$144
45WF-42	\$155
45WF-48	\$189

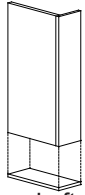
## Angled Overlay Filler



Overlay filler for angled filler, may be fluted or half spindle attached.

45OWF-30	\$79
45OWF-36	\$84
45OWF-42	\$92
45OWF-48	\$100

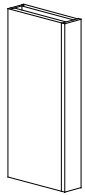
## Wall End Panel



Left shown

Finished end panel attached to a filler. Specify LEFT or RIGHT side. Includes bottom.

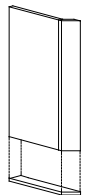
WEP 3X30-12	L-R	\$231	WEP 6X30-12	L-R	\$278
WEP 3X36-12	L-R	\$245	WEP 6X36-12	L-R	\$295
WEP 3X42-12	L-R	\$282	WEP 6X42-12	L-R	\$339
WEP 3X48-12	L-R	\$319	WEP 6X48-12	L-R	\$382



## Wall End Panel Boxed

Order the above wall end panel necessary and price accordingly. If two sides are needed to make a wall end panel box specify.

WEP 3 X 42-12"	\$282
BOX WALL	\$145

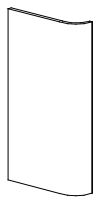


Left shown

## Angled Wall End Panel

Finished angled end panel attached to a filler. Specify LEFT or RIGHT side. Includes bottom.

AWEP 3X30	L-R	\$362	AWEP 6X30	L-R	\$415
AWEP 3X36	L-R	\$376	AWEP 6X36	L-R	\$428
AWEP 3X42	L-R	\$415	AWEP 6X42	L-R	\$461
AWEP 3X48	L-R	\$455	AWEP 6X48	L-R	\$514



Left shown

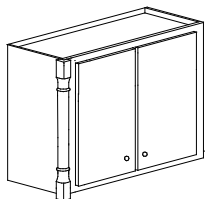
## Wall Radius End Panel

3" or 6" finished end panel.

WREP EP 3 X 30-12	L-R	\$733
WREP EP 3 X 36-12	L-R	\$776
WREP EP 3 X 42-12	L-R	\$902
WREP EP 6 X 30-12	L-R	\$853
WREP EP 6 X 36-12	L-R	\$904
WREP EP 6 X 42-12	L-R	\$1,046

## Applied Spindles

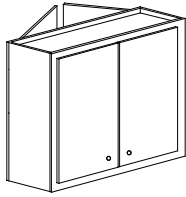
Half or whole spindles can be applied to the face of a filler, ear, or end panel.



Contact factory for cost of applying a spindle to a cabinet.

Spindle priced separately. See Section N for styles available and pricing.

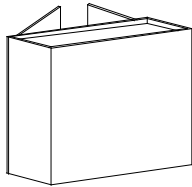
## Peninsula Cabinets



Compute at 50% of cabinet and specify PENN

W3630-12	\$947
PENN	\$474

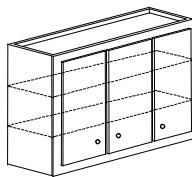
## Finished Backs



1/2" plywood installed on back of cabinets. Cabinet depth does not change. Overall length of back of cabinet equals overall length on face of cabinet.

FINISHED BACK	\$0.25 per square inch
---------------	------------------------

## Three Door Wall Cabinet



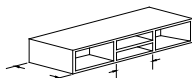
Available on cabinets 39" - 48" wide. Cabinet will have three doors. Unless specified otherwise, there will be three (3) equal openings with a center mull between each. Hinging will be LLR. If a partition is needed behind center mull you must add for FTP and specify behind left or right mull.

Note: 48" wide cabinet no additional charge. Does not include FTP.

3DR-WALL	\$185
----------	-------

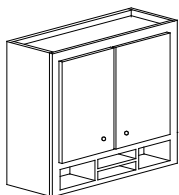
## Pigeon Hole Unit

All PHU's are 3/4" thick solid wood in matching wood species. They are 6" high and 12" deep. 39" and wider have 2 additional vertical partitions.



PHU 30-12	\$801	PHU 42-12	\$900
PHU 33-12	\$825	PHU 45-12	\$924
PHU 36-12	\$853	PHU 48-12	\$960
PHU 39-12	\$876		

## Pigeon Hole Unit Attached To A Cabinet



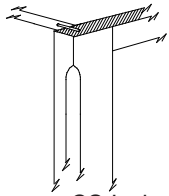
When a PHU is attached to the bottom of a cabinet it will be an integral part of the cabinet. The overall height of the cabinet increases 6". Bottom rail is 1" wide with a 5" high opening. The PHU is 12" deep. Specify PHU ATTACHED specifying the size i.e. W 3330-12 with a 6" high PHU attached with an overall height of 36"

*i.e. W 3330-12*

*W 3330-12 PHU 36 ATTACHED*

PHU 30-12 ATTACHED	\$801	PHU 42-12 ATTACHED	\$900
PHU 33-12 ATTACHED	\$825	PHU 45-12 ATTACHED	\$924
PHU 36-12 ATTACHED	\$853	PHU 48-12 ATTACHED	\$960
PHU 39-12 ATTACHED	\$876		



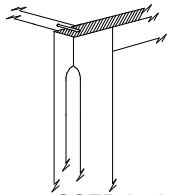


CS-L shown

### Chamfered Stile (framed cabinetry only)

Any stile on a wall cabinet can be ordered as a chamfered stile.  
Chamfer is 1/2" x 1/2".

CS L-R \$159



CSFD-L shown

### Chamfered Stile With Flutes (framed cabinetry only)

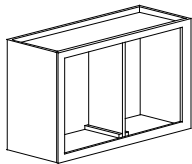
Any stile on a wall cabinet can be ordered as a chamfered stile.  
Chamfer is 1/2" x 1/2".

CSFD L-R \$286

## Fluting

Fluting is available on any cabinetry or accessories. Our standard flute width is 3/8" wide, but other widths are available. Please provide detailed drawing with all information about spacing, start and stop positions, and width of flutes. Flutes are priced per lineal foot. See Section M for pricing.

## Partitions



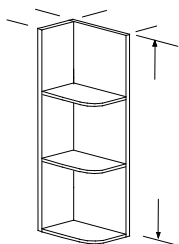
1/4" plywood removable partitions faced with 3/4" x 3/4" solid stock. Specify location and number. If location not furnished, space will be divided equally. For 60" or higher, see section I.

Series 110 will be 3/4" particleboard w/ Birch finish. Series 310 will be 3/4" plywood edge-banded.

TP \$156

If partition is behind center mull or if fixed partition is required:

FTP \$156



Left shown

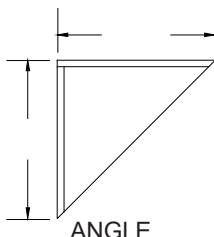
### Wall Cabinet Shelf Unit

Units are 1/2" edgebanded plywood sides with 3/4" thick solid wood shelves. Standard unit will be furnished unless specified otherwise. Specify L-R on standard style. Shelves are fixed. Specify ANGLE, FR, SR, or WEA.

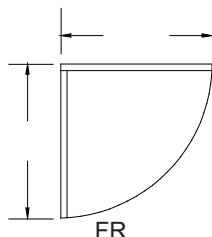
**NOTE: Top with cross rail required when using crown moulding. Top will be square (no radius). Angle and WEA top corresponds with style of shelf.**

WCSU-TOP	L-R	\$240
WCSU 30-12	L-R	\$394
WCSU 33-12	L-R	\$426
WCSU 36-12	L-R	\$458

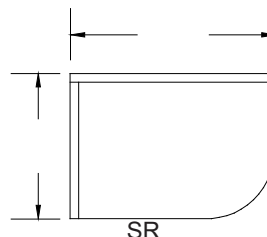
WCSU 39-12	L-R	\$491
WCSU 42-12	L-R	\$522
WCSU 48-12	L-R	\$587



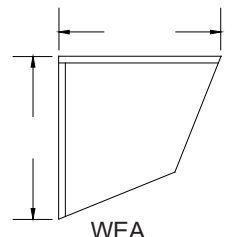
ANGLE



FR



SR



WEA

## Arched Valance



Specify height and width of the arch. Include a drawing if necessary.

ARCH 36" x 6" shown

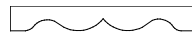
ARCH

3" - 6" height \$66 per linear ft  
 over 6" to 9" height \$78 per linear ft  
 over 9" to 12" height \$115 per linear ft

## Valances



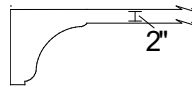
VAL A \$42 per linear ft



VAL E \$66 per linear ft



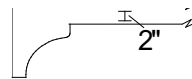
VAL B \$66 per linear ft



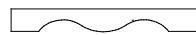
VAL FB1 \$66 per linear ft



VAL C \$66 per linear ft

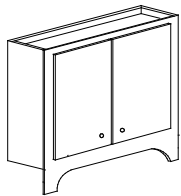


VAL FB2 \$66 per linear ft



VAL D \$66 per linear ft

To put a decorative edge on a valance (to match door profile) specify and add \$12 per linear ft

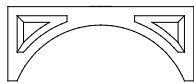


## Bottom Rail Valance

Face of cabinet will increase 4 1/2". Valance will be Type B as shown unless specified otherwise. When a side needs to be extended down, combine with an Extended Bottom Rail (EBR).

BOTTOM RAIL VALANCE \$232

## Door Style Arch Valance



If size is not shown, fax drawing with dimensional information for quote.

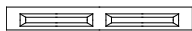
DR STYLE ARCH  
48" x 15" shown

DR STYLE ARCH 30" wide x 12-18" height \$1,334  
 DR STYLE ARCH 36" wide x 12-18" height \$1,378  
 DR STYLE ARCH 42" wide x 12-18" height \$1,411  
 DR STYLE ARCH 48" wide x 12-18" height \$1,462  
 DR STYLE ARCH 54" wide x 12-18" height \$1,495  
 DR STYLE ARCH 60" wide x 12-18" height \$1,529

## Door Style Valance

(not available for inset)

A valance with the corresponding door style DRAWER HEAD attached to a piece of 3/4" solid stock. Reveals depend on overlay being used. Available in 3" increments. Each size may be trimmed up to 3".



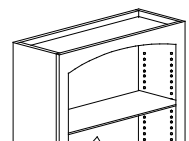
DOOR STYLE VAL 24" - 36" \$262 2 panels  
 DOOR STYLE VAL 39" - 48" \$488 2 panels  
 DOOR STYLE VAL 51" - 60" \$506 2 panels  
 DOOR STYLE VAL 61" - 72" \$525 2 panels

## Valance In Lieu Of Top Rail

For use in the top of wall cabinets without doors and/or BCW cabinets.

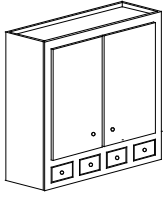
VAL IN LIEU \$92 per linear ft

Specify Type A,B,C, D,E, Arched, FB-1, or FB-2.



VAL IN LIEU-ARCH shown

## Spice Drawers



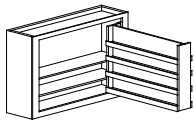
Spice drawers may be added to the bottom of any wall cabinet. This adds 6" to the overall height and the drawer opening will be 4 1/2" on framed, 5 1/4" on frameless. Side stiles of cabinet are extended down. Drawers are inset and have 1" partitions between them. Each slab drawer head is attached to a drawer box and operates without drawer tracks.

SPICE \$71 per drawer

**NOTE: Cabinet price is based on the overall height of the cabinet. Then add for the number of spice drawers.**

*i.e. W 3630-12 SPICE-4-36 \$1061  
4 SPICE \$284*

## Swing Out Spice Rack



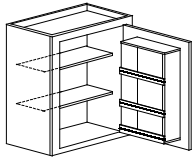
Right shown

Available only in cabinets 27" to 36" wide and 30" or taller. Insert is same size for all. On a 27" wide cabinet, shelves are behind spice rack. Over 27" wide, shelves are behind and on side of spice rack. Insert is 5 1/2" deep, 21" wide, 24 1/2" high. 2 1/4" shelf space for each side.

Solid wood construction with natural finish. 36" and 42" high cabinets have additional shelf above spice rack.

SSR L-R \$1,017

## Door Spice Rack



Right shown

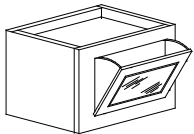
Spice rack attached to back of door. Solid wood construction with natural finish. On double door cabinets, specify left or right.

Available on units 30" or taller x 15" or wider.

Spice rack is 3 1/4" deep, 22" high, width is 3 1/2" less than cabinet opening. 2 1/2" shelf space.

DSR L-R \$313

## Tilt Out Storage Bin



Wall cabinet with tilt out storage bin. Door has plain glass insert and finished interior. Used for dry goods only. Cabinet is 12" deep and 18" high.

TOSB 1518-12 \$924  
TOSB 1818-12 \$973  
TOSB 2118-12 \$1,016

## Stemware Holder

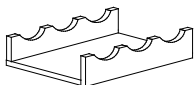
May be ordered separately or attached to the bottom of any standard wall cabinet. Same wood species as cabinet manufactured - 11 3/4" deep.



STEMWARE HOLDER-12 \$278 per linear ft

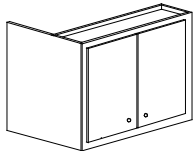
Cabinet Width	# of slots	Cabinet Width	# of slots
12"-15"	2	36"-39"	6
18"-21"	3	42"-45"	7
24"-27"	4	48"	8
30"-33"	5		

## Wine Rack Shelf



Wine rack shelf added to a cabinet. Order with the corresponding cabinet so exact width will be known. See page F-13 for additional options.

WINESHELF \$198 per linear ft

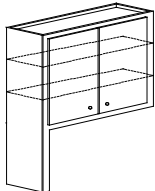


Left shown

### Extended Side Back

Wall cabinet side may be extended back.

ESB WALL L-R \$157



Left shown

### Extended Side Down

Wall cabinet side may be extended down. 24" maximum extension. 66" maximum overall height.

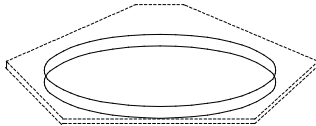
ESD WALL L-R \$231

### Shelves (Additional)

SHELF	\$18	per linear ft	GLASS SHELF		
WOOD FRAMED			up to 36" wide	\$103	per square ft
GLASS SHELF (WFGS)	\$272	per linear ft.	wider than 36"	\$ 145	per square ft,

See M-7 for Solid Wood (Finished) Shelving

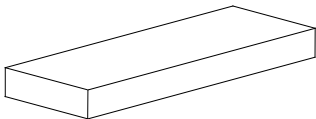
### Wood Revolving Shelf



For wall corner angle cabinets, revolving shelf constructed of 5/8" plywood and has a solid wood band with a 1" high edge. The shelf rotates on a ball bearing mechanism attached to a shelf.

WRS \$362

### Floating Shelf



A shelf with cavity for mounting brackets.

Standard height is 2 1/4", minimum height is 1 1/2", maximum height is 6", Specify depth if other than 12".

Specify finished Left, finished Right, finished Both, or Open on both sides. Add \$55 per finished side.

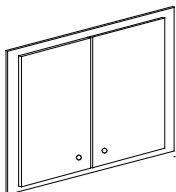
Float-Shelf	24	R-L-Both-Open	\$881	Float-Shelf	33	R-L-Both-Open	\$941
Float-Shelf	27	R-L-Both-Open	\$901	Float-Shelf	36	R-L-Both-Open	\$961
Float-Shelf	30	R-L-Both-Open	\$921				

### 1/4" Finished End Panel (framed cabinetry only)

No charge for finished ends if ordered on original order. Send layout with order.

1/4" thick matching wood species veneer to be field applied to the end of a wall cabinet.

FINISHED END PANEL-WALL \$92

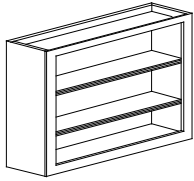


### Fronts (framed cabinetry only)

A front of any standard size wall cabinet is available. Consists of 1 1/2" face frame and doors.

For special size fronts go to next larger size.

FRONT ONLY WALL 65% of corresponding cabinet price



### Delete Doors

Any wall cabinet may be ordered without doors and with a finished interior to match exterior. Shelves are adjustable.

DELETE DOORS

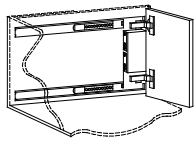
---

### Unfinished Cabinets

Exterior of cabinets will be sanded, ready to receive customer's finish but will not have sealer, stain, or top coat. Cabinetry is not warranted.

---

### Retractable Doors



A ball bearing flipper slide that features an attached door that swings open and retracts into an opening. Wall cabinet must be 13" deep for retractable doors. When ordering cabinet, you must order a finished interior, if necessary.

RETRACTABLE \$786 per door

---

### Retractable Door Partition

Partitions may be installed in the unit to provide a pocket for the doors to conceal flipper slides or provide a space to install adjustable shelves. Deduct 9" from overall width of unit to determine clearance.

RETRAC/PART \$330

---

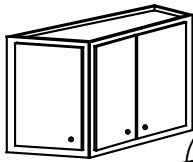
### Bi-Fold Lift System



Telescopic lift arm has Blum motion integrated into the lift mechanism. Can only be used as a bi-fold door lift. When ordering cabinet, you must order a finished interior, if necessary.

BIFOLD LIFT \$2,472

### Angled Cabinets, Two Fronts



Left Shown

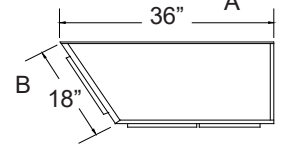


To price angled cabinets with two fronts, use the A dimension cabinet price and add to it the price for a B dimension front. (65% of the B cabinet price)  
Example: If A is 36" and B is 17", you would take the price of a W3630 and add it to 65% of the price of a W1830.

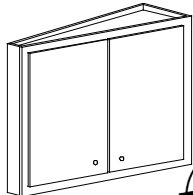
ANGLED CAB WALL L-R

*i.e. W 3630-12*

+ ANGLED CAB WALL (65% of W 1830-12)



### Angled Cabinets, Single Front



Left Shown



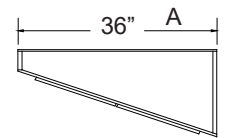
To price angled cabinets with one front, use the A dimension cabinet price - add 25%. Then add ANGLED CAB price to the cabinet price.

ANGLED CAB L-R \$194

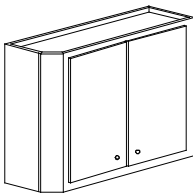
*i.e. W 3630-12*

+ Angle (25% of W3630-12)

+ ANGLED CAB



### Clipped Cabinets



A=36", Left Shown

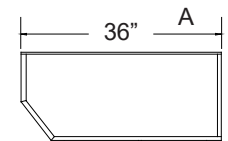


To price a cabinet with a clipped corner, use the A dimension cabinet price. A 3" clip will be used if not specified.

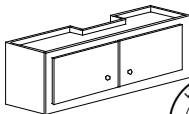
CLIPPED CORNER L-R \$406

*i.e. W 3630-12*

+3" CLIPPED CORNER L



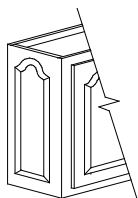
### Obstruction Cutout



Submit drawings and dimensions.

OBCU \$593

### Decorative Wall End, Flush



Left shown



Integral inlay panel manufactured into the side of a wall cabinet. Includes a flush end, overall width of cabinet does not change.

DWE FLUSH 30	L-R	\$378	Over 30" and up to 47" high
DWE FLUSH 34-47	L-R	\$428	Over 30" and up to 47" high
DWE-DPD-H FLUSH 48-60	L-R	\$521	Over 48" high and up to 60" high DPD-H (split equally)
DWE-DPD-H FLUSH 60-72	L-R	\$789	Over 60" high and up to 72" high DPD-H (split equally)

The following door styles are not decorative ends. They need to be ordered as DOOR ON END OF CABINET or FACE FRAME AND DOOR ON END OF CABINET, and priced accordingly.

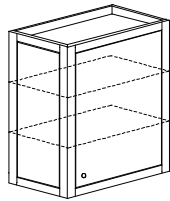
Continental IX  
Continental X  
Continental XI  
Continental XII

Danville  
Douglas  
Edgemont

Marquis  
Pioneer  
Saxony

Sheffield  
Slab  
All Inset Doors

### Face Frame And Door On End Of Wall Cabinet

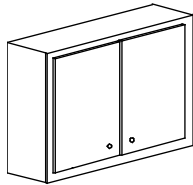


Left shown



To apply a working door or non-operable door to the end of a cabinet. Manufactured with a flush end that includes 1 1/2" rails and stiles.

DRWE 30	L-R	\$410	Up to 30" high
DRWE 30-54	L-R	\$510	Over 30" and up to 54" high
DRWE 54-60	L-R	\$619	Over 54" and up to 60" high
DRWE 30-NON	L-R	\$410	Up to 30" high
DRWE 34-54-NON	L-R	\$510	Over 30" and up to 54 high
DRWE 54-60-NON	L-R	\$619	Over 54" and up to 60" high
DRWE 60-72-NON	L-R	\$845	Over 60" and up to 72" high (2 door high split equally)



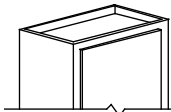
Flush top shown



### Flush Finished Top Or Bottom

Manufactured with matching wood veneer flush with top, bottom, and sides. Does not include flush finished sides, flush sides are separate charge.

FLUSH WALL TOP	\$231
FLUSH WALL BOTTOM	\$231



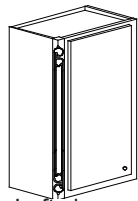
Left shown



### Flush Sides

Any wall cabinet may be ordered with flush finished sides. The lip is eliminated but the overall size of the cabinet remains the same. The side will be manufactured with 3/4" thick material in lieu of 1/2".

FFS	L-R	\$324
-----	-----	-------



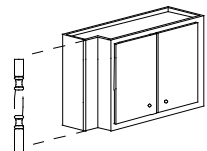
Left shown



### French Country Corner

Radius corner with special carving. Overall width of cabinet remains the same. 1 1/2" wide face plus 1 1/2" wide stile as pictured.

FRENCH CC	L-R	\$1,592
-----------	-----	---------



CN-L 4" x 4" shown

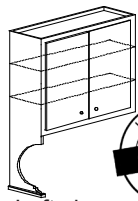


### Corner Notch Wall Modification

Whole or quartered spindles can be applied to notch. Spindle is not included. Send drawing with dimensional information. Must specify the width and depth of notch.

See Section N for spindle pricing.

CN WALL	L-R	\$551
---------	-----	-------



Left shown



### Hutch End

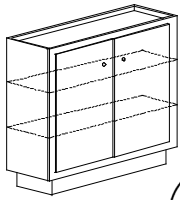
A solid 3/4" hutch end may be added to any wall cabinet. Includes a flush end. Maximum extension 18", overall height 60". Specify LEFT or RIGHT side and length of extension.

HUTCH END	L-R	\$278
-----------	-----	-------

HUTCH-B-Back extends both hutch ends and the back of the cabinet.

HUTCH-B-BACK	\$737	HUTCH-B-Back extends both hutch ends and the back of the cabinet.
--------------	-------	---

### Toe Kick Added To Wall Cabinet



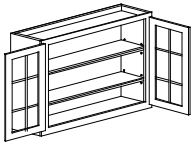
A toe kick may be added to any wall cabinet. A toe kick platform 4 1/2" high and 7 3/4" less than the overall width of the cabinet will be attached to the bottom of the wall cabinet. The overall height of the wall cabinet increases 4 1/2".

TKA-PLATFORM \$212



To add a toe kick to the bottom of a wall cabinet that is an integral part of the wall cabinet, i.e. the side of the cabinet extends to the floor, you **MUST** order a BX cabinet 12" deep. See section J.

### Shelves Fixed Or 3-Hole Option



When using mullion doors, the shelf will line up with mullion. When cabinet has no doors and fixed shelves are required, specify location of shelf.

FIXED SHELVES \$225 per cabinet  
3-HOLE OPTION \$109 per cabinet

3-HOLE option shown





***Page for notes***